



HYDRAULIC CYLINDERS INC.®

# 'HCA' SERIES APPLICATION CHECKLIST

DATE

/ /

**Need help selecting the right cylinder for your application?**

Just fill out as much information about your application and contact HYDRAULIC CYLINDERS INC.®.

**PHONE:** 1-888-771-1894 | **FAX:** 1-888-693-8681 | **EMAIL:** sales@hydrauliccylindersinc.com | **WEB:** HydraulicCylindersInc.com

## CUSTOMER INFORMATION

CUSTOMER  CONTACT

HOW DO YOU WANT TO BE CONTACTED?

PHONE  FAX  EMAIL

## APPLICATION INFORMATION

DO YOU HAVE A BASIC CYLINDER DESCRIPTION?

BORE  STROKE  MOUNT  OPTIONS

MODIFICATION

CYLINDER OPERATING PRESSURE:  PNEUMATIC PSI  HYDRAULIC PSI (NON-STOCK)

AMBIENT TEMPERATURE:  NORMAL INDOOR INDUSTRIAL  COLD: \_\_\_\_\_ °F  HOT: \_\_\_\_\_ °F

CYLINDER VELOCITY: \_\_\_\_\_ INCHES/SECOND \_\_\_\_\_ CYCLES PER MINUTE:

CYLINDER ORIENTATION:  HORIZONTAL  VERTICAL:  ROD UP  ROD DOWN  ANGLE (DEGREES)

**DESCRIBE THE LOAD (INCLUDING WEIGHT). IS THE LOAD GUIDED? HOW IS THE CYLINDER ROD ATTACHED TO THE LOAD? ANY SIDE LOAD?**

---

---

---

---

---

---

---

---

**APPLICATION:**

---

---

---

---

---

---

---

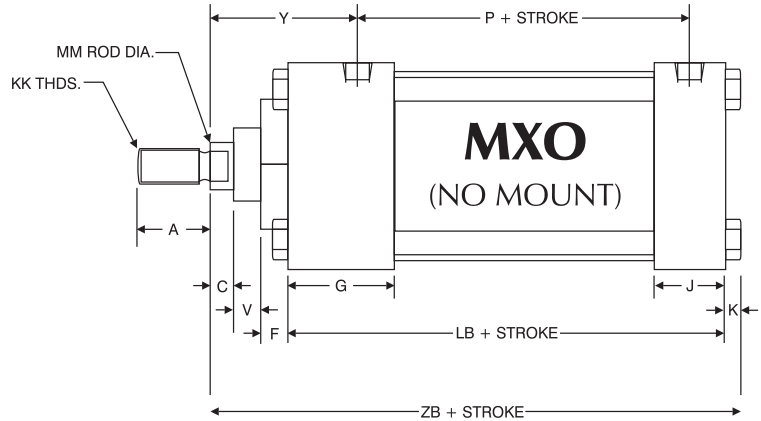
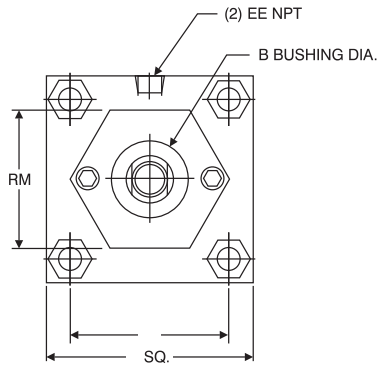
---





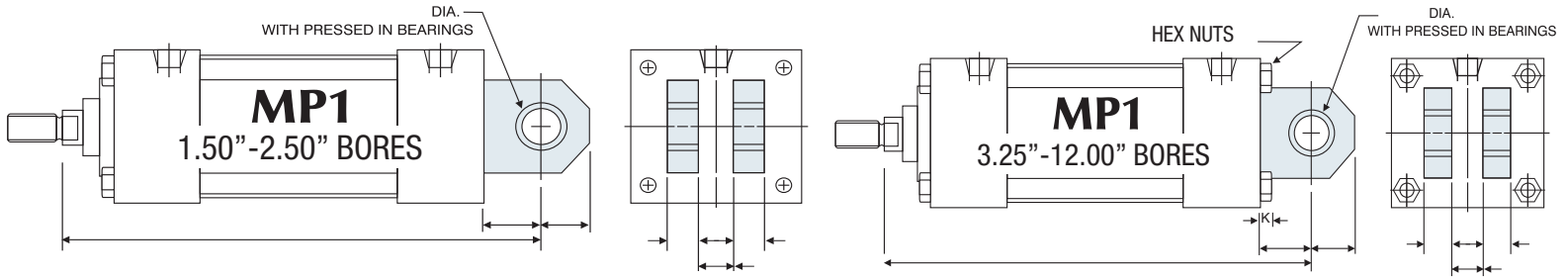
## SERIES 'HCA' DIMENSIONS | BASIC CYLINDER (NO MOUNT)

### BASIC MODELS



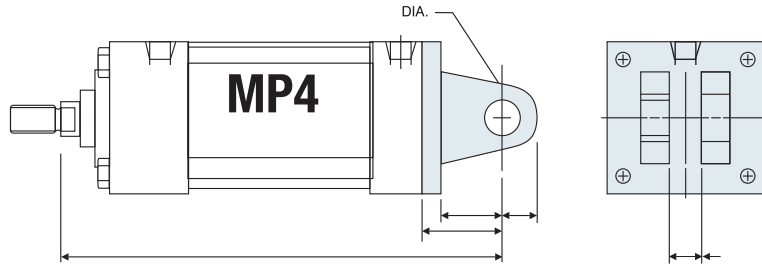
**BASIC DIMENSIONS 'MXO' STANDARD AND OVERSIZE RODS**

| BORE  | ROD DIAMETER   | A     | B     | C     | E      | EE    | F     | G     | J     | K     | KK       | LB    | MM    | P     | R     | RM       | V     | Y     | ZB    |
|-------|----------------|-------|-------|-------|--------|-------|-------|-------|-------|-------|----------|-------|-------|-------|-------|----------|-------|-------|-------|
| 1.50  | 0.625 Standard | 0.750 | 1.125 | 0.375 | 2.000  | 0.375 | 0.375 | 1.500 | 1.000 | 0.250 | 7/16-20  | 3.625 | 0.625 | 2.375 | 1.438 | 2.00 SQ  | 0.250 | 1.875 | 4.875 |
|       | 1.000 Oversize | 1.125 | 1.500 | 0.500 |        |       |       |       |       |       | 3/4-16   |       | 1.000 |       |       |          | 0.500 |       |       |
| 2.00  | 0.625 Standard | 0.750 | 1.125 | 0.375 | 2.500  | 0.375 | 0.375 | 1.500 | 1.000 | 0.313 | 7/16-20  | 3.625 | 0.625 | 2.375 | 1.844 | 1.75 HEX | 0.250 | 1.875 | 4.938 |
|       | 1.000 Oversize | 1.125 | 1.500 | 0.500 |        |       |       |       |       |       | 3/4-16   |       | 1.000 |       |       | 0.500    | 2.250 |       |       |
| 2.50  | 0.625 Standard | 0.750 | 1.125 | 0.375 | 3.000  | 0.375 | 0.375 | 1.500 | 1.000 | 0.313 | 7/16-20  | 3.750 | 0.625 | 2.500 | 2.188 | 1.75 HEX | 0.250 | 1.875 | 5.063 |
|       | 1.000 Oversize | 1.125 | 1.500 | 0.500 |        |       |       |       |       |       | 3/4-16   |       | 1.000 |       |       | 0.500    | 2.250 |       |       |
| 3.25  | 1.000 Standard | 1.125 | 1.500 | 0.500 | 3.750  | 0.500 | 0.625 | 1.750 | 1.250 | 0.375 | 3/4-16   | 4.250 | 1.000 | 2.750 | 2.766 | 2.75 DIA | 0.250 | 2.375 | 6.000 |
|       | 1.375 Oversize | 1.625 | 2.000 | 0.625 |        |       |       |       |       |       | 1-14     |       | 1.375 |       |       | 0.375    | 2.625 |       |       |
| 4.00  | 1.000 Standard | 1.125 | 1.500 | 0.500 | 4.500  | 0.500 | 0.625 | 1.750 | 1.250 | 0.375 | 3/4-16   | 4.250 | 1.000 | 2.750 | 3.320 | 2.75 DIA | 0.250 | 2.375 | 6.000 |
|       | 1.375 Oversize | 1.625 | 2.000 | 0.625 |        |       |       |       |       |       | 1-14     |       | 1.375 |       |       | 0.375    | 2.625 |       |       |
| 5.00  | 1.000 Standard | 1.125 | 1.500 | 0.500 | 5.500  | 0.500 | 0.625 | 1.750 | 1.250 | 0.438 | 3/4-16   | 4.500 | 1.000 | 3.000 | 4.100 | 2.75 DIA | 0.250 | 2.375 | 6.313 |
|       | 1.375 Oversize | 1.625 | 2.000 | 0.625 |        |       |       |       |       |       | 1-14     |       | 1.375 |       |       | 0.375    | 2.625 |       |       |
| 6.00  | 1.375 Standard | 1.625 | 2.000 | 0.625 | 6.500  | 0.750 | 0.625 | 2.000 | 1.500 | 0.438 | 1-14     | 5.000 | 1.375 | 3.250 | 4.875 | 3.50 DIA | 0.375 | 2.750 | 7.063 |
|       | 1.750 Oversize | 2.000 | 2.375 | 0.750 |        |       |       |       |       |       | 1 1/4-12 |       | 1.750 |       |       | 0.500    | 3.000 |       |       |
| 8.00  | 1.375 Standard | 1.625 | 2.000 | 0.625 | 8.500  | 0.750 | 0.625 | 2.000 | 1.500 | 0.563 | 1-14     | 5.125 | 1.375 | 3.375 | 6.438 | 3.50 DIA | 0.375 | 2.750 | 7.313 |
|       | 1.750 Oversize | 2.000 | 2.375 | 0.750 |        |       |       |       |       |       | 1 1/4-12 |       | 1.750 |       |       | 0.500    | 3.000 |       |       |
| 10.00 | 1.750 Standard | 2.000 | 2.375 | 0.750 | 10.625 | 1.000 | 0.625 | 2.250 | 2.000 | 0.688 | 1 1/4-12 | 6.375 | 1.750 | 4.313 | 7.922 | 3.50 DIA | 0.500 | 3.063 | 8.938 |
|       | 2.000 Oversize | 2.250 | 2.625 | 0.875 |        |       | 0.750 |       |       |       | 1 1/2-12 |       | 2.000 |       |       | 0.375    | 3.188 |       |       |
| 12.00 | 2.250 Standard | 2.250 | 2.625 | 0.875 | 12.750 | 1.000 | 0.750 | 2.250 | 2.000 | 0.688 | 1 1/2-12 | 6.875 | 2.000 | 4.813 | 9.400 | 5.00 DIA | 0.375 | 3.188 | 9.563 |
|       | 2.500 Oversize | 3.000 | 3.125 | 1.000 |        |       |       |       |       |       | 1 7/8-12 |       | 2.500 |       |       | 0.500    | 3.438 |       |       |



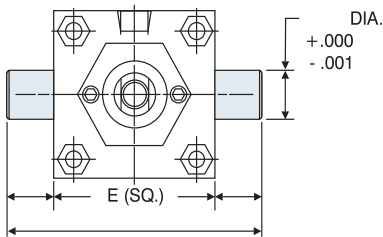
### EXTRUDED MP1 MOUNT

(EXTRUDED: 1.50" - 8.00" BORES, WELDMENT: 10.00" & 12.00" BORES)

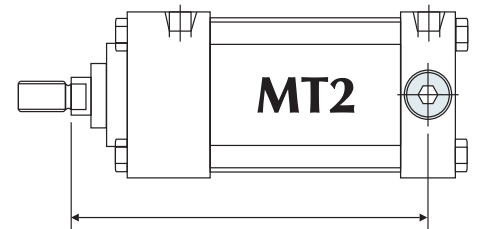
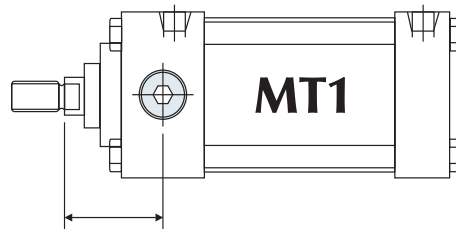


### MP4 MOUNT

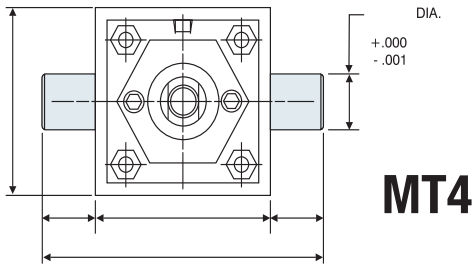
(IRON CASTING: 1.50" - 4.00" BORES, WELDMENT: 5.00" - 6.00" BORES\*)



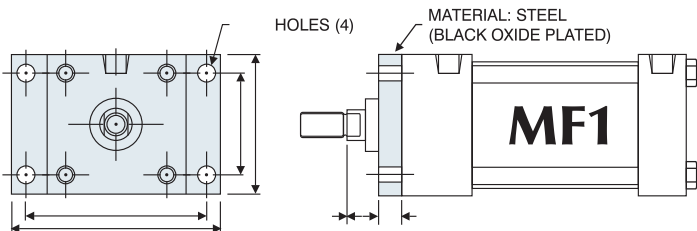
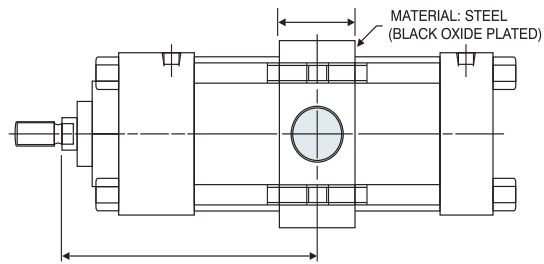
Note: MT1 and MT2 Trunnions are bolt on, non-removable design.



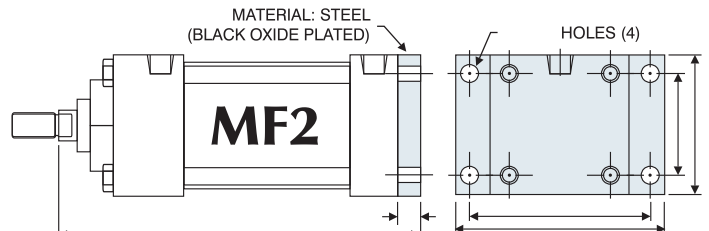
Optional: One-piece solid steel trunnion available.



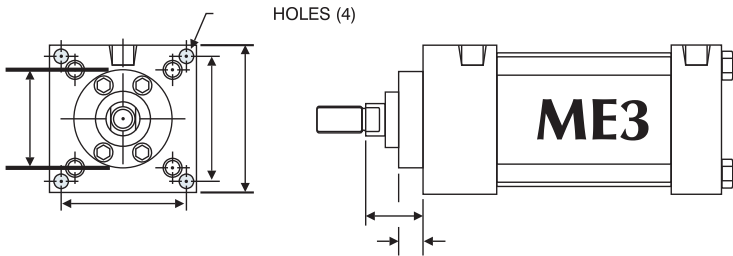
### MT4



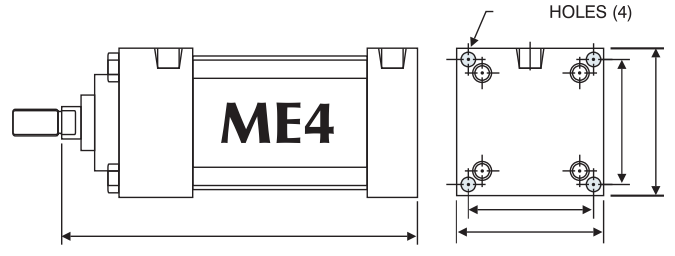
1.50" - 6" BORES



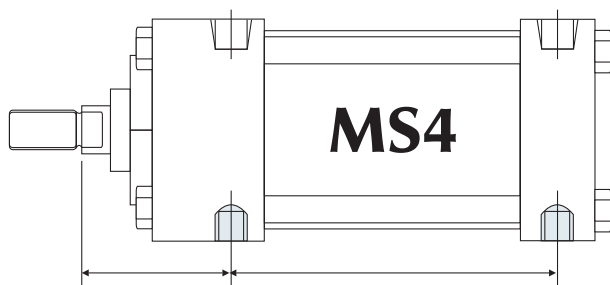
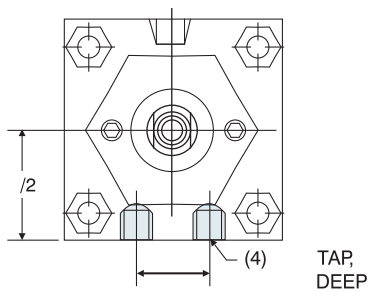
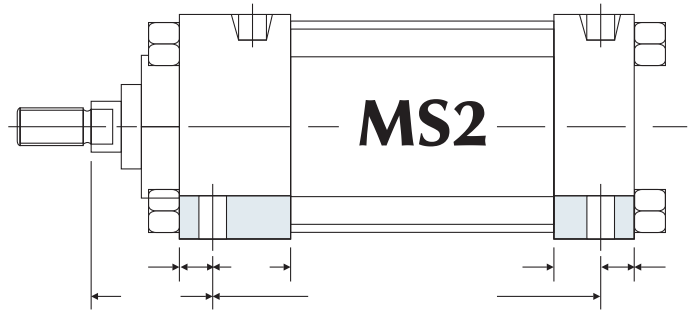
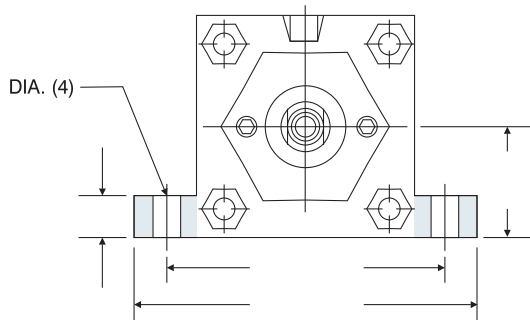
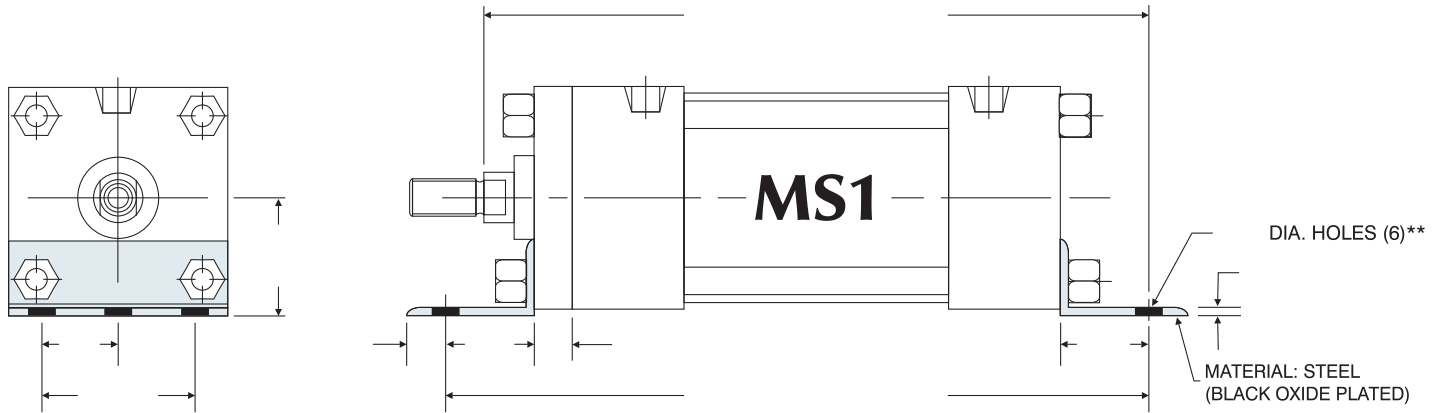
1.50" - 6" BORES



**8" - 12" BORES**



**8" - 12" BORES**





---

**SKETCH**  
(INCLUDE DIMENSIONS)

A large, empty grid of small squares, intended for drawing a technical sketch of a hydraulic cylinder. The grid is composed of 30 columns and 30 rows of squares, providing a structured area for the student to draw and include dimensions.

