



HYDRAULIC CYLINDERS INC.® 'H' SERIES APPLICATION CHECKLIST

DATE

/ /

Need help selecting the right cylinder for your application?

Just fill out as much information about your application and contact HYDRAULIC CYLINDERS INC.®.

PHONE: 1-888-771-1894 | **FAX:** 1-888-693-8681 | **EMAIL:** sales@hydrauliccylindersinc.com | **WEB:** HydraulicCylindersInc.com

CUSTOMER INFORMATION

CUSTOMER

CONTACT

HOW DO YOU WANT TO BE CONTACTED?

PHONE

FAX

EMAIL

APPLICATION INFORMATION

DO YOU HAVE A BASIC CYLINDER DESCRIPTION?

BORE

STROKE

MOUNT

OPTIONS

MODIFICATION

CYLINDER OPERATING PRESSURE: PNEUMATIC PSI HYDRAULIC PSI (NON-STOCK)

AMBIENT TEMPERATURE: NORMAL INDOOR INDUSTRIAL COLD: _____ °F HOT: _____ °F

CYLINDER VELOCITY: _____ INCHES/SECOND _____ CYCLES PER MINUTE:

CYLINDER ORIENTATION: HORIZONTAL VERTICAL: ROD UP ROD DOWN ANGLE (DEGREES)

DESCRIBE THE LOAD (INCLUDING WEIGHT). IS THE LOAD GUIDED? HOW IS THE CYLINDER ROD ATTACHED TO THE LOAD? ANY SIDE LOAD?

APPLICATION:

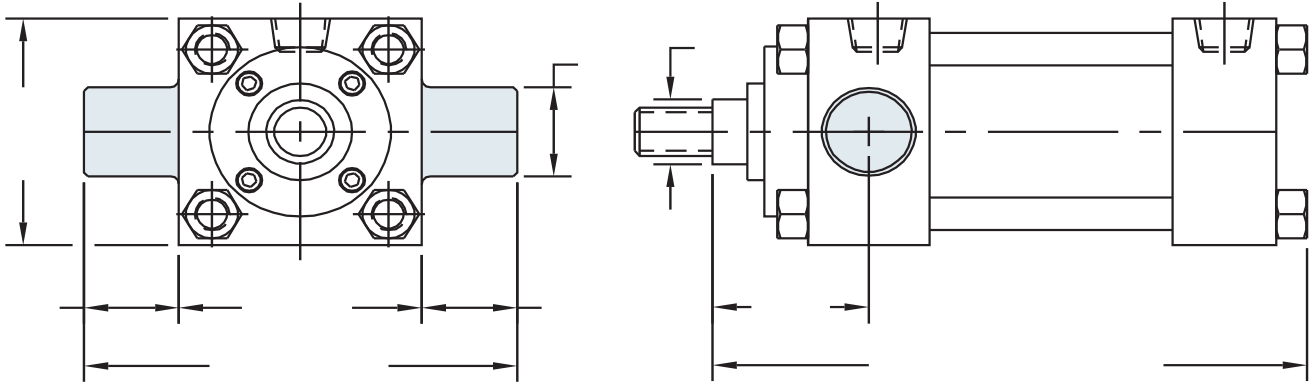


SERIES 'H' DIMENSIONS | BASIC CYLINDER

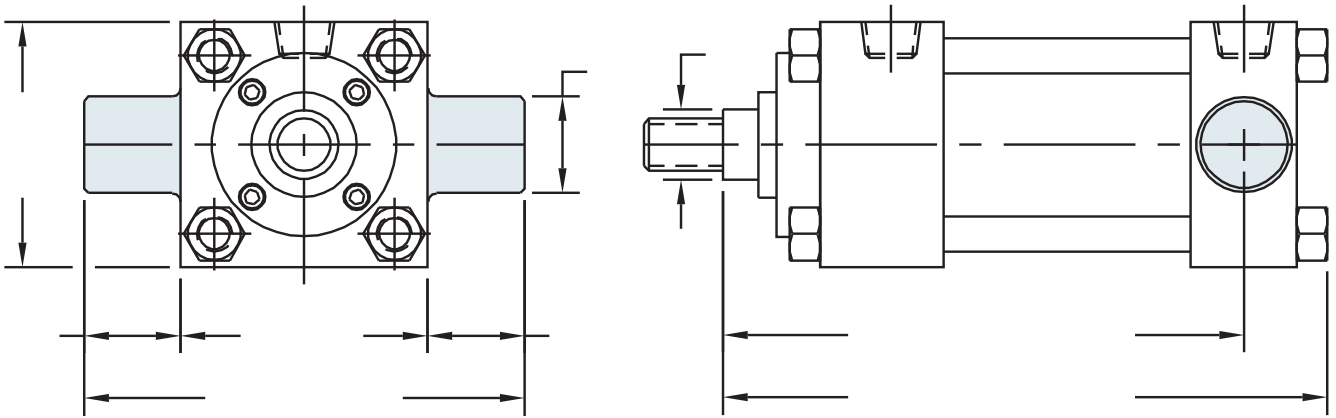
BORE	ROD DIA. (MM)	MAX PSI RATING	E	A	B	C	EE		F	G	J	K	KK	R	RD	V	Y	ADD TO STROKE		
							NPTF	SAE										LB	P	ZB
1.50	0.625	3000	2.500	0.750	1.124	0.375	1/2	10	0.375	1.750	1.500	0.375		1.625	-	0.250	2.000	4.625	2.938	6.000
	1.000			1.125	1.499	0.500		8							0.500	2.375	6.375			
2.00	1.000	3000	3.000	1.125	1.499	0.500	1/2	10	0.625	1.750	1.500	0.438		2.050	-	0.250	2.375	4.625	2.938	6.438
	1.375			1.625	1.999	0.625		8							0.375	2.625	6.688			
2.50	1.000	3000	3.500	1.125	1.499	0.500	1/2	10	0.625	1.750	1.500	0.438		2.550	2.625	0.250	2.375	4.750	3.063	6.563
	1.375			1.625	1.999	0.625									-	0.375	2.625			6.813
	1.750			2.000	2.374	0.750									-	0.500	2.875			7.063
3.25	1.375	3000	4.500	1.625	1.999	0.625	3/4	12	0.750	2.000	1.750	0.563		3.250	3.250	0.250	2.750	5.500	3.500	7.688
	1.750			2.000	2.374	0.750									-	0.375	3.000			7.938
	2.000			2.250	2.624	0.875									-	0.375	3.125			8.063
4.00	1.750	3000	5.000	2.000	2.374	0.750	3/4	12	0.875	2.000	1.750	0.563		3.820	3.875	0.250	2.938	5.750	3.875	8.188
	2.000			2.250	2.624	0.875									4.250	0.250	3.063			8.313
	2.500			3.000	3.124	1.000									-	0.375	3.313			8.563
5.00	2.000	3000	6.500	2.250	2.624	0.875	3/4	12	0.875	2.000	1.750	0.813		4.950	4.250	0.250	3.125	6.250	4.250	9.063
	2.500			3.000	3.124	1.000									4.625	0.375	3.375			9.313
	3.000			3.500	3.749	1.000									5.250	0.375	3.375			9.313
	3.500			3.500	4.249	1.000									-	0.375	3.375			9.313
6.00	2.500	3000	7.500	3.000	3.124	1.000	1	16	0.875	2.250	2.250	0.875		5.730	4.625	0.375	3.500	7.375	5.000	10.500
	3.000			3.500	3.749				0.875						5.250	0.375				
	3.500			3.500	4.249				0.875						5.625	0.375				
	4.000			4.000	4.749				1.000						6.438	0.250				
8.00	3.500	3000	9.500	3.500	4.249	1.000	1 1/2	24	0.875	3.000	3.000	1.250		7.500	5.625	0.375	3.938	9.500	6.313	13.000
	4.000			4.000	4.749				1.000						6.438	0.250				
	4.500			4.500	5.249				1.000						7.125	0.250				
	5.000			5.000	5.749				1.000						7.625	0.250				
	5.500			5.500	6.249				1.000						8.375	0.250				

SEE ROD END DETAIL CHART ON PREVIOUS PAGE

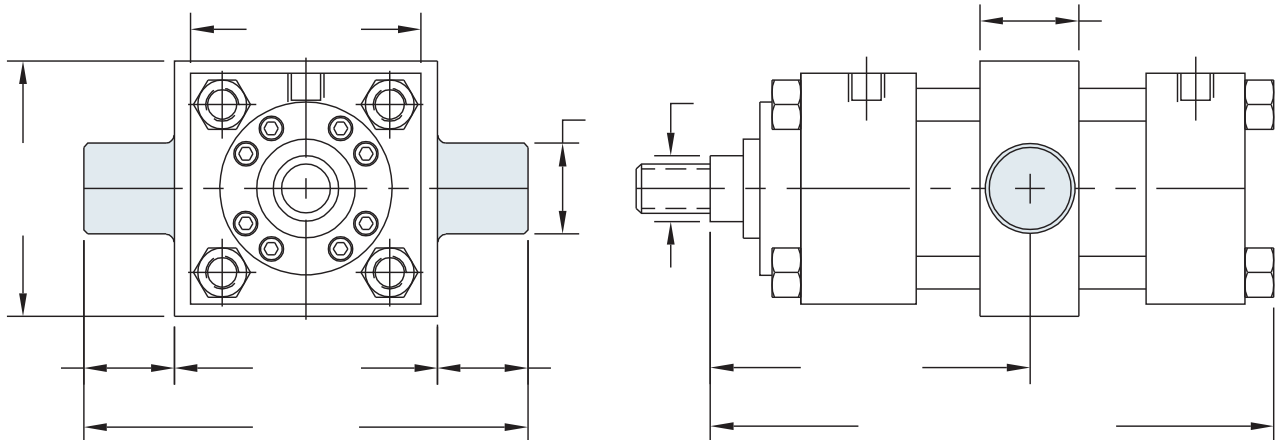
MT1: HEAD TRUNNION



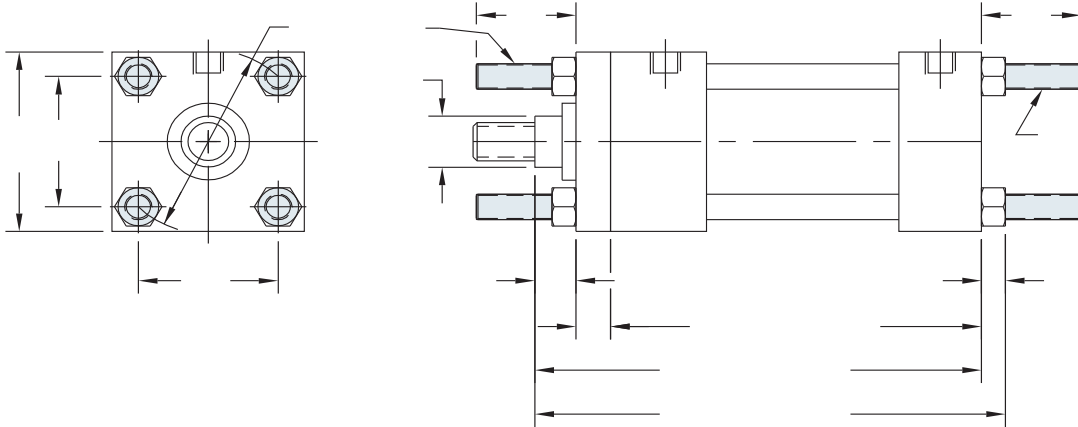
MT2: CAP TRUNNION



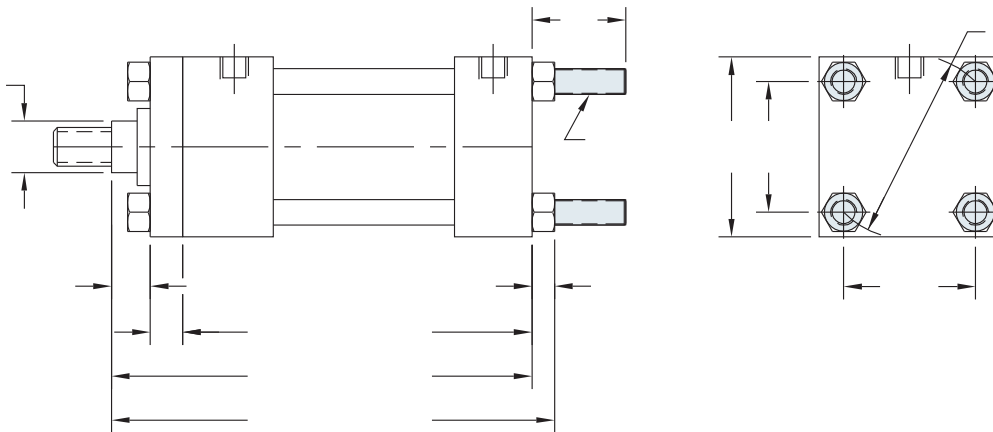
MT4: INTERMEDIATE TRUNNION



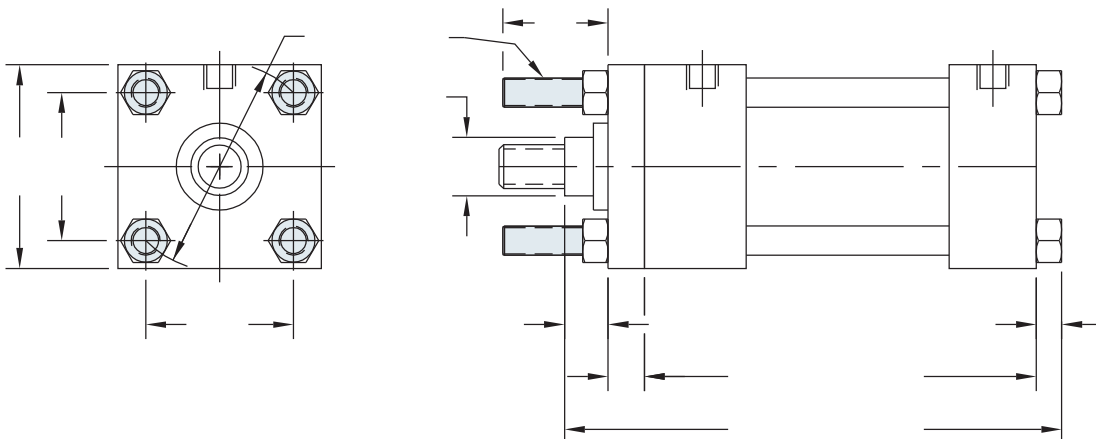
MX1: EXTENDED TIE-RODS - HEAD & CAP



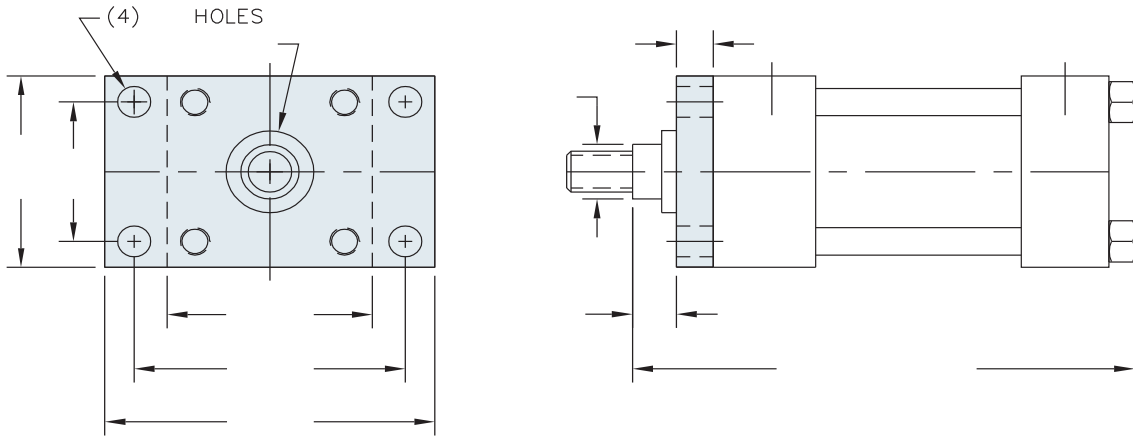
MX2: EXTENDED TIE-RODS - CAP END



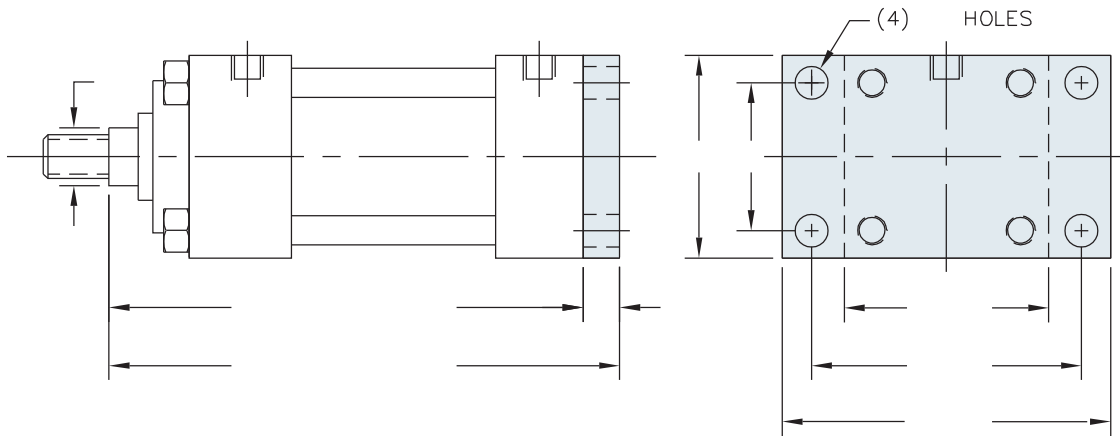
MX3: EXTENDED TIE-RODS - HEAD END



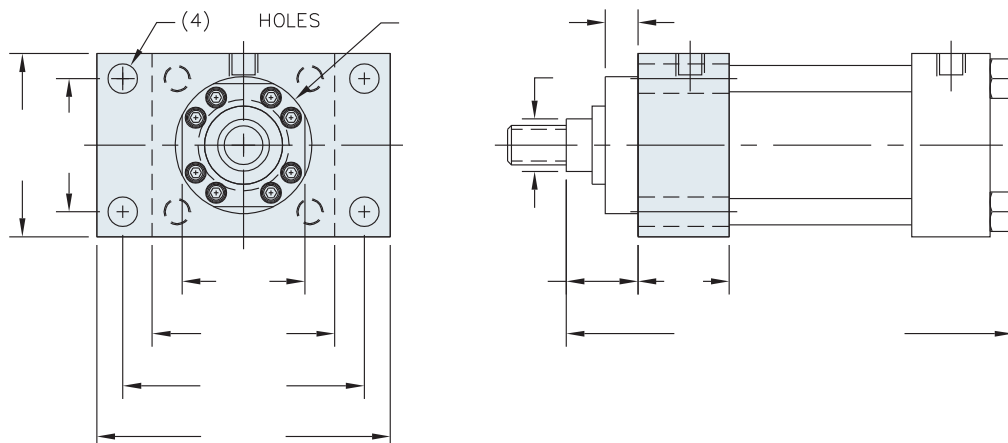
MF1: HEAD FLANGE



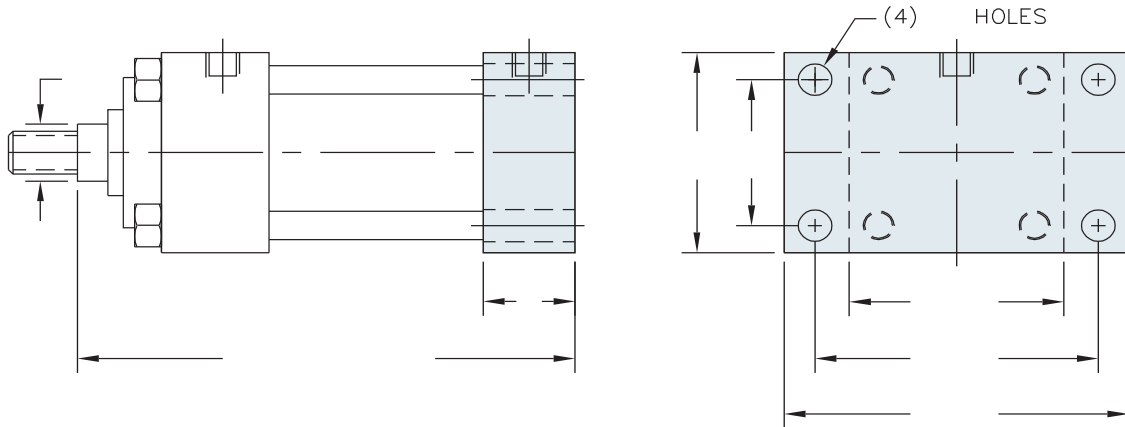
MF2: CAP FLANGE



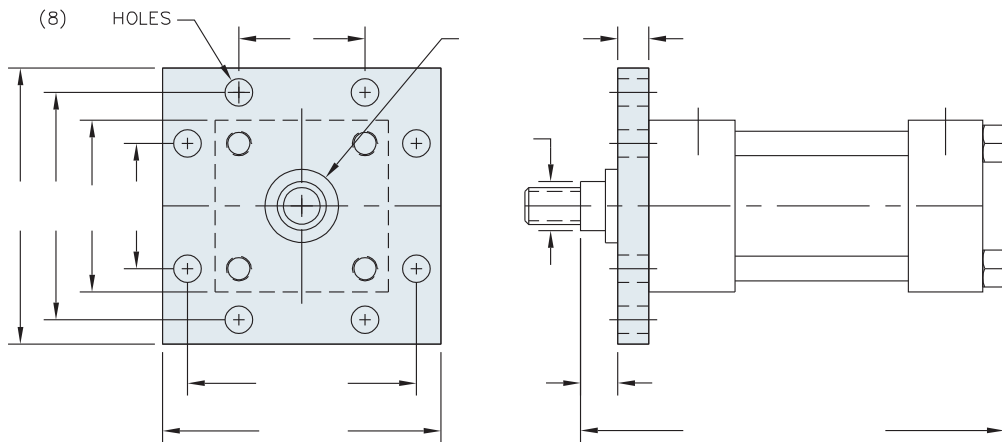
ME5: HEAD RECTANGULAR MOUNTING HOLES



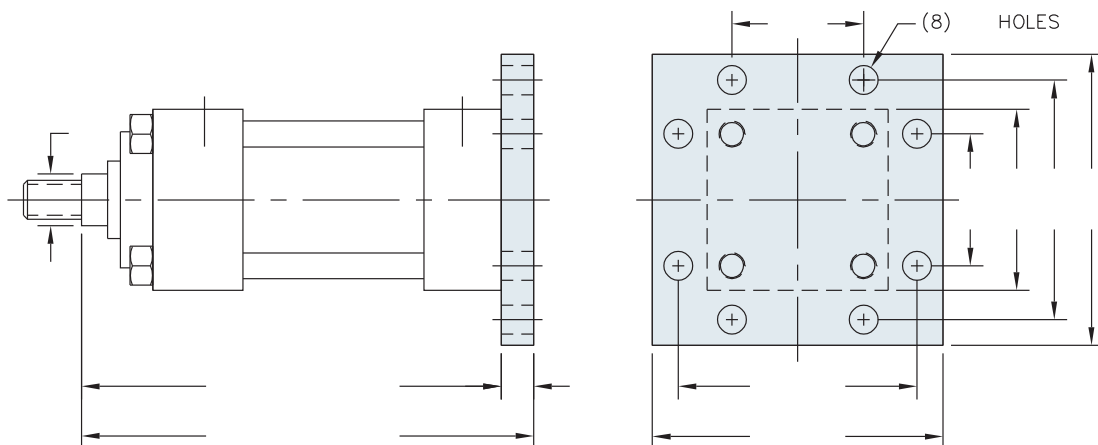
ME6: CAP RECTANGULAR MOUNTING HOLES



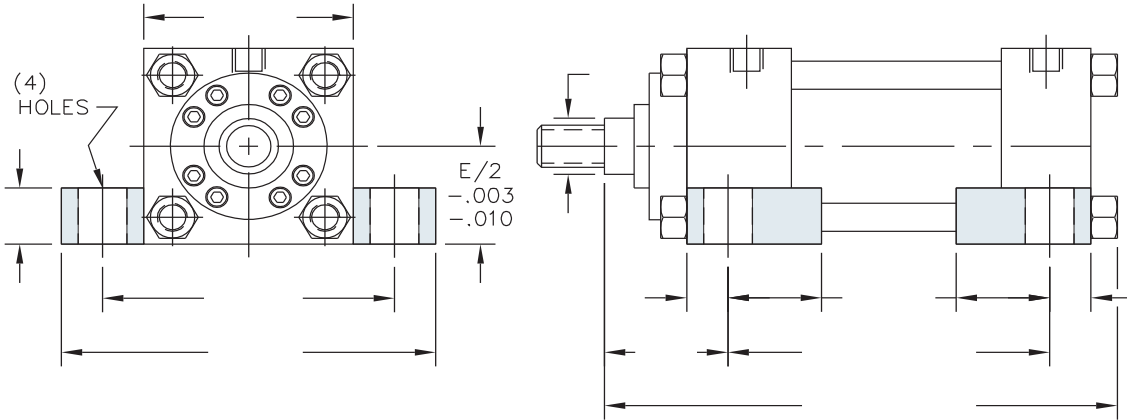
MF5: HEAD SQUARE FLANGE



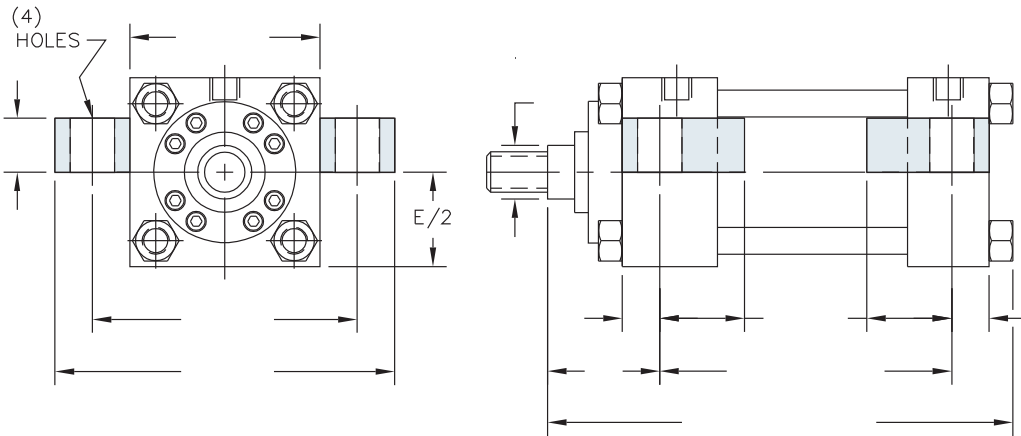
MF6: CAP SQUARE FLANGE



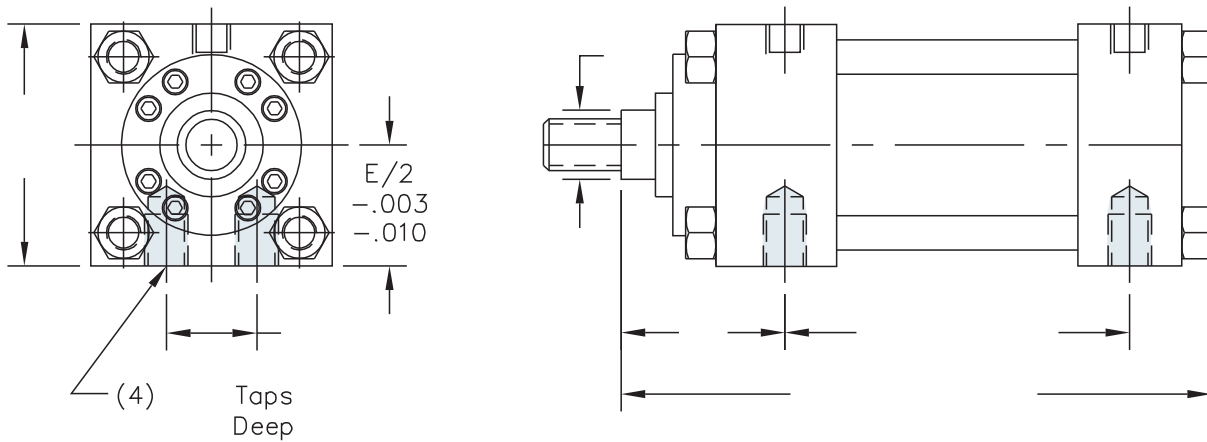
MS2: SIDE LUGS



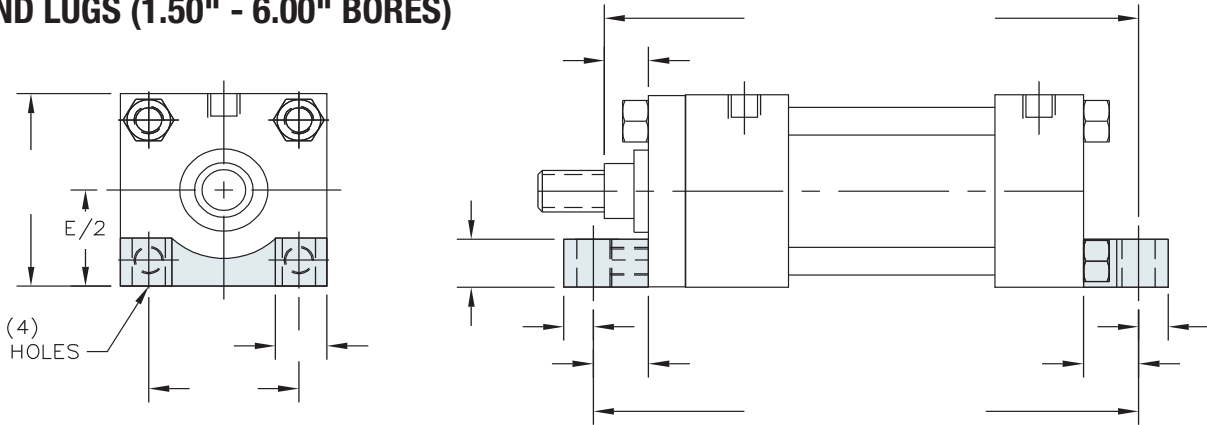
MS3: CENTER LINE LUGS



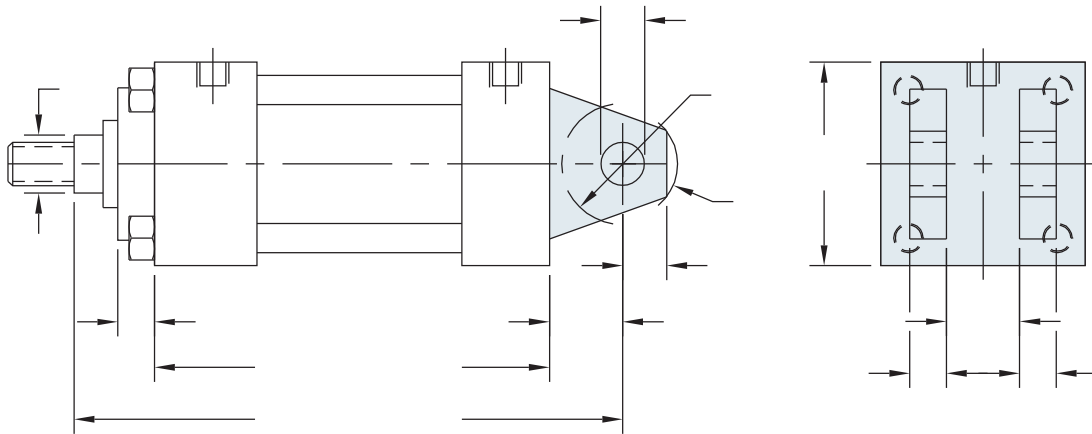
MS4: BOTTOM TAPPED HOLES



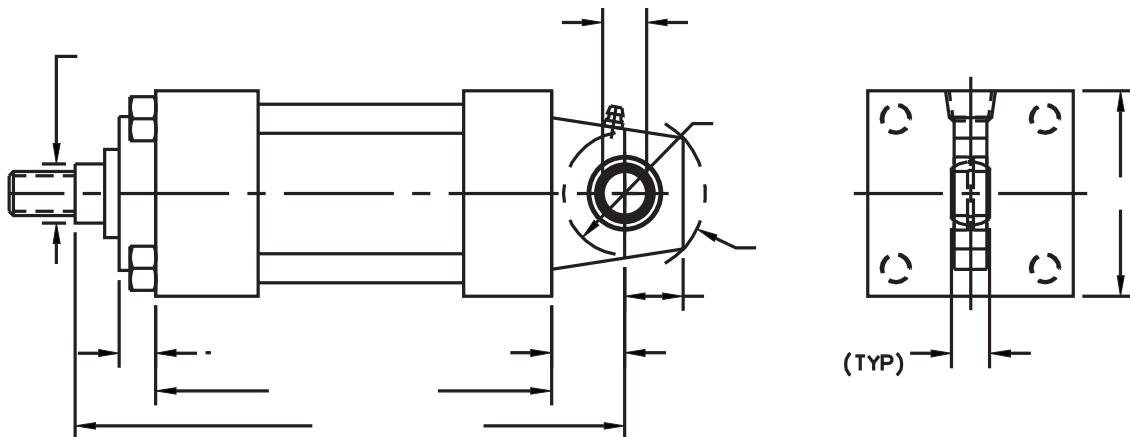
MS7: END LUGS (1.50" - 6.00" BORES)



MP1: REAR PIVOT CLEVIS



SPHERICAL BEARING MOUNT





SKETCH
(INCLUDE DIMENSIONS)

A large, empty grid of small squares, intended for drawing a technical sketch of a hydraulic cylinder. The grid is composed of 20 columns and 30 rows of squares, providing a structured area for the student to draw and include dimensions.

