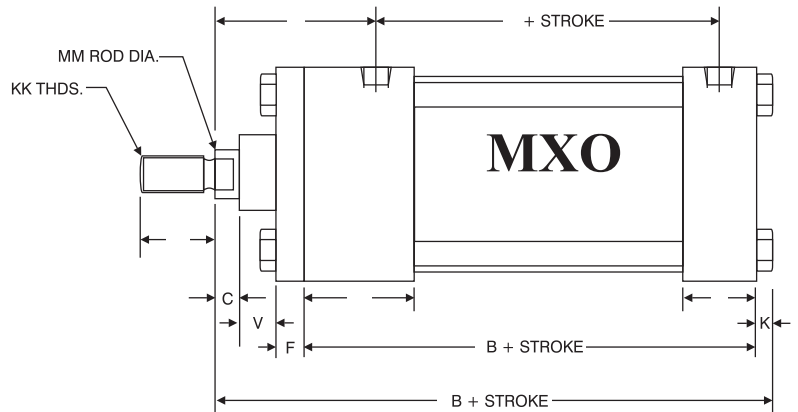
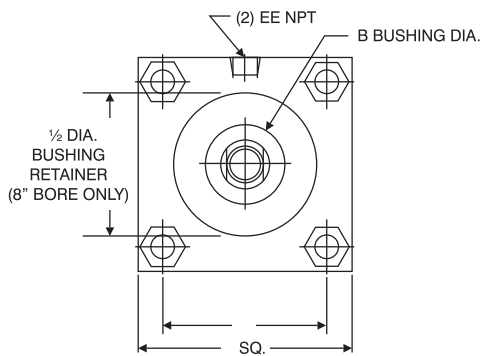




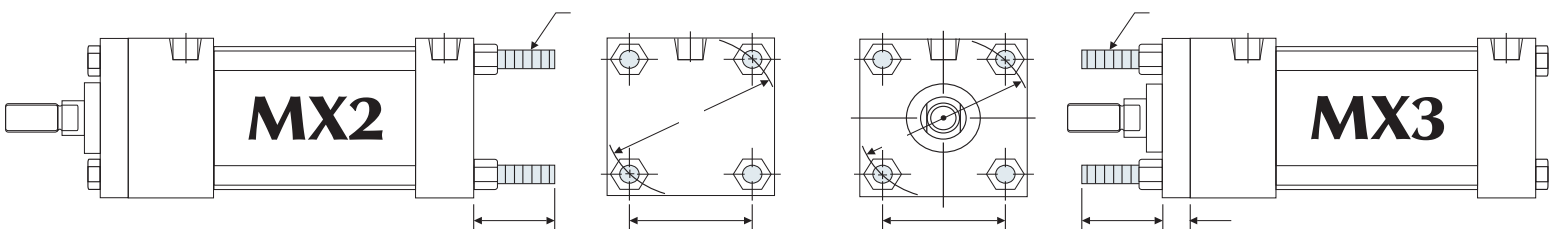
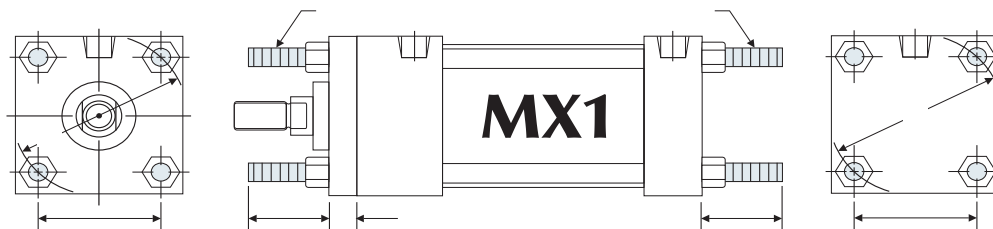
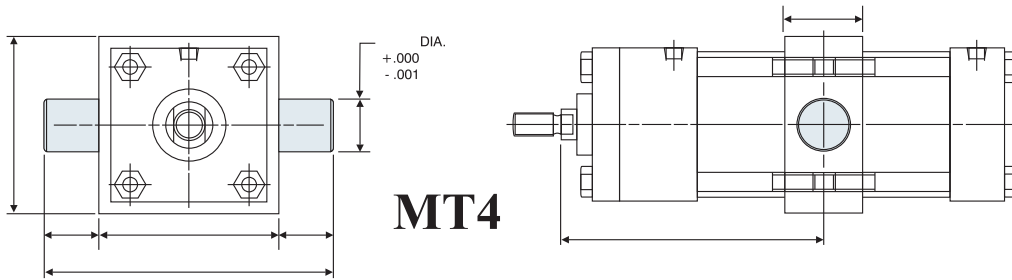
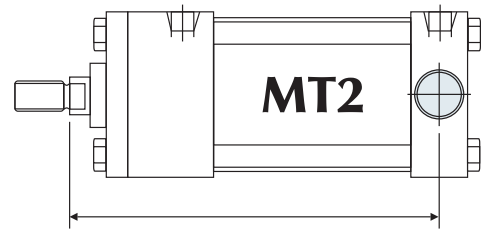
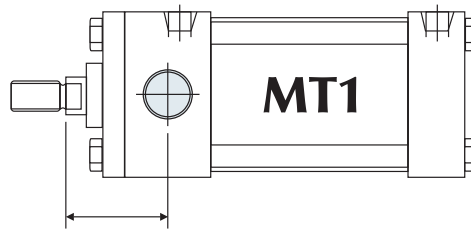
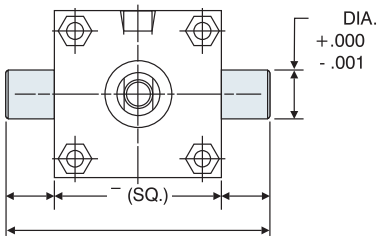
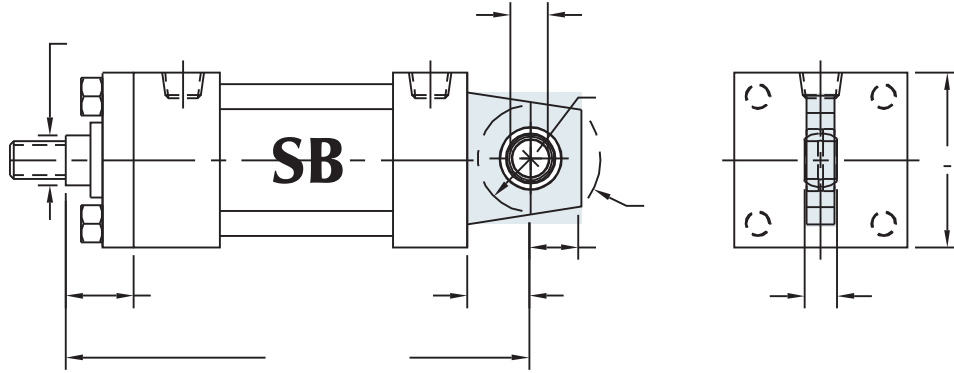
SERIES 'TS' DIMENSIONS | BASIC CYLINDER (NO MOUNT)

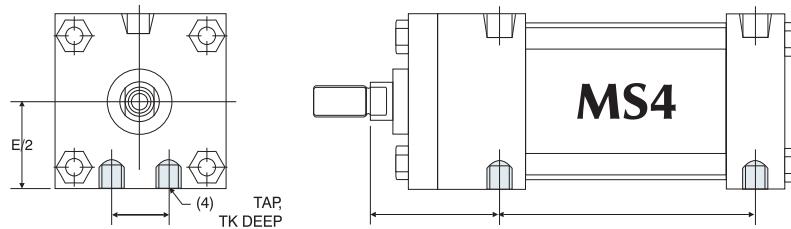
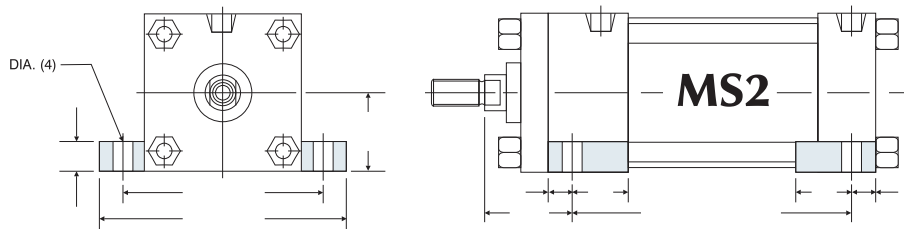
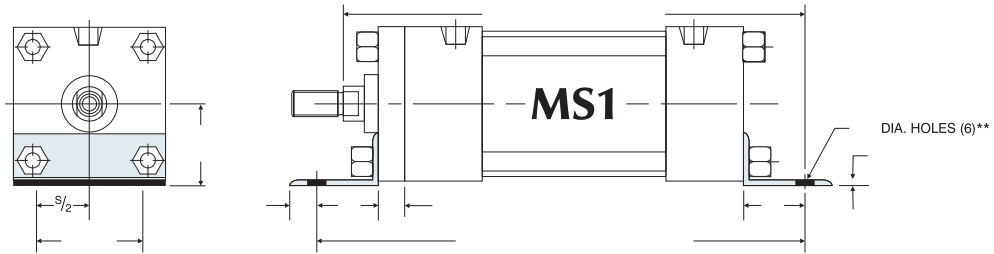
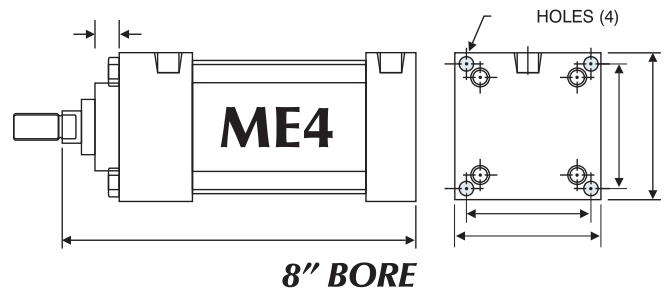
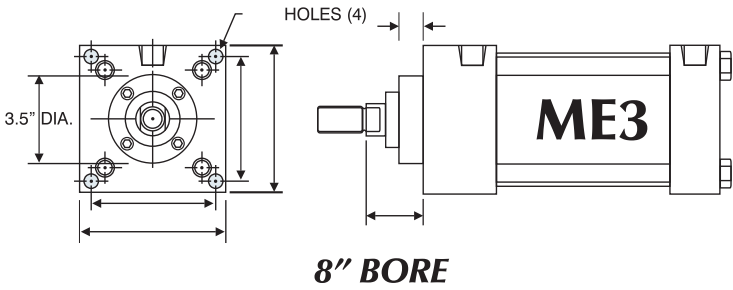
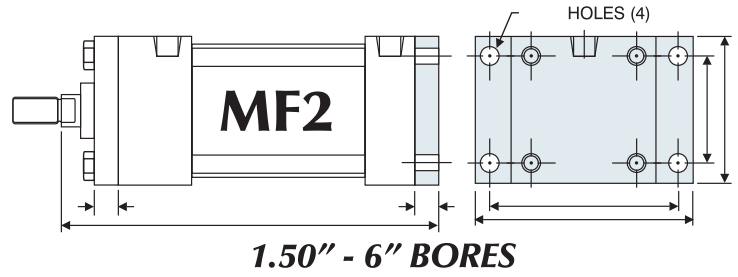
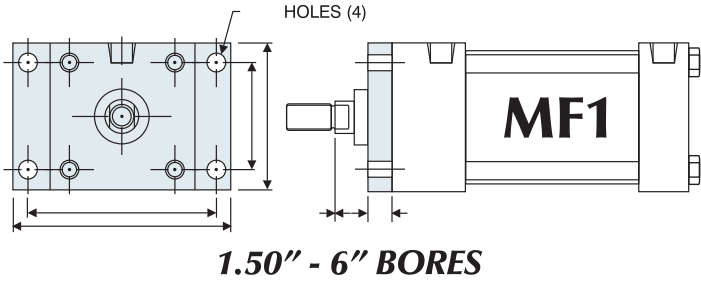
BASIC MODELS



BASIC DIMENSIONS STANDARD RODS

BORE	ROD DIAMETER	A	B	C	E	EE	F	G	J	K	KK	R	V	Y	ADD TO STROKE		
															LB	P	ZB
1.50	0.625 Standard	0.750	1.125	0.375	2.000	0.375	0.375	1.500	1.000	0.250	7/16-20	1.438	0.250	1.875	3.625	2.375	4.875
	1.000 Oversize	1.125	1.500	0.500							3/4-16		0.500	2.250			5.250
2.00	0.625 Standard	0.750	1.125	0.375	2.500	0.375	0.375	1.500	1.000	0.313	7/16-20	1.844	0.250	1.875	3.625	2.375	4.938
	1.000 Oversize	1.125	1.500	0.500							3/4-16		0.500	2.250			5.313
2.50	0.625 Standard	0.750	1.125	0.375	3.000	0.375	0.375	1.500	1.000	0.313	7/16-20	2.188	0.250	1.875	3.750	2.500	5.063
	1.000 Oversize	1.125	1.500	0.500							3/4-16		0.500	2.250			5.438
3.25	1.000 Standard	1.125	1.500	0.500	3.750	0.500	0.625	1.750	1.250	0.375	3/4-16	2.766	0.250	2.375	4.250	2.750	6.000
	1.375 Oversize	1.625	2.000	0.625							1-14		0.375	2.625			6.250
4.00	1.000 Standard	1.125	1.500	0.500	4.500	0.500	0.625	1.750	1.250	0.375	3/4-16	3.328	0.250	2.375	4.250	2.750	6.000
	1.375 Oversize	1.625	2.000	0.625							1-14		0.375	2.625			6.250
5.00	1.000 Standard	1.125	1.500	0.500	5.500	0.500	0.625	1.750	1.250	0.438	3/4-16	4.109	0.250	2.375	4.500	3.000	6.313
	1.375 Oversize	1.625	2.000	0.625							1-14		0.375	2.625			6.563
6.00	1.375 Standard	1.625	2.000	0.625	6.500	0.750	0.750	2.000	1.500	0.438	1-14	4.875	0.250	2.750	5.000	3.250	7.063
	1.750 Oversize	2.000	2.375	0.750							1 1/4-12		0.375	3.000			7.313
8.00	1.375 Standard	1.625	2.000	0.625	8.500	0.750	0.625	2.000	1.500	0.563	1-14	6.438	0.375	2.750	5.125	3.375	7.313
	1.750 Oversize	2.000	2.375	0.750							1 1/4-12		0.500	3.000			7.563







SKETCH
(INCLUDE DIMENSIONS)

A large, empty grid of small squares, intended for drawing a technical sketch of a hydraulic cylinder. The grid is composed of 30 columns and 30 rows of squares.

